

# Data communication and network

Stockholmsmässan offers data communication services over both fixed and wireless networks based on state of the art technology and the latest standards. The infrastructure covers the whole premises including exhibition halls, congress halls, meeting rooms and public areas.

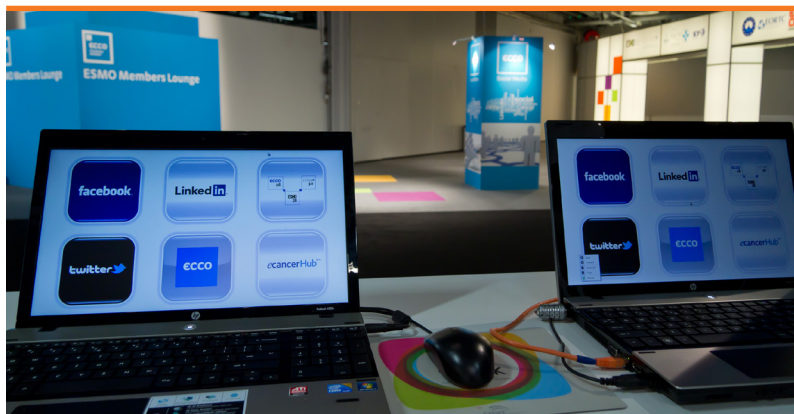
We have the knowledge and experience of designing fixed and wireless networks, with redundant internet connection, to meet the highest requirements when it comes to capacity and accessibility.

Fixed network connections can be delivered to any place in the premises and our wireless infrastructure offers the latest technology and supports the AC-standard. Our 420 access points around the premises ensure top class Wi-Fi capacity and great coverage.

We also provide an open Wi-Fi network in all public areas. This free-of-charge-service serves both visitors and exhibitors with a possibility to check emails and surf the web with a reduced bandwidth.

When ordering IT services, service and support is of course included in the price during the whole event. Please contact our sales rep or project manager for further information or a quotation.

- **State of the art technology**
- **Service and support during the whole event**
- **Please contact our sales rep or project manager for further information or a quotation**



# Data communication and network

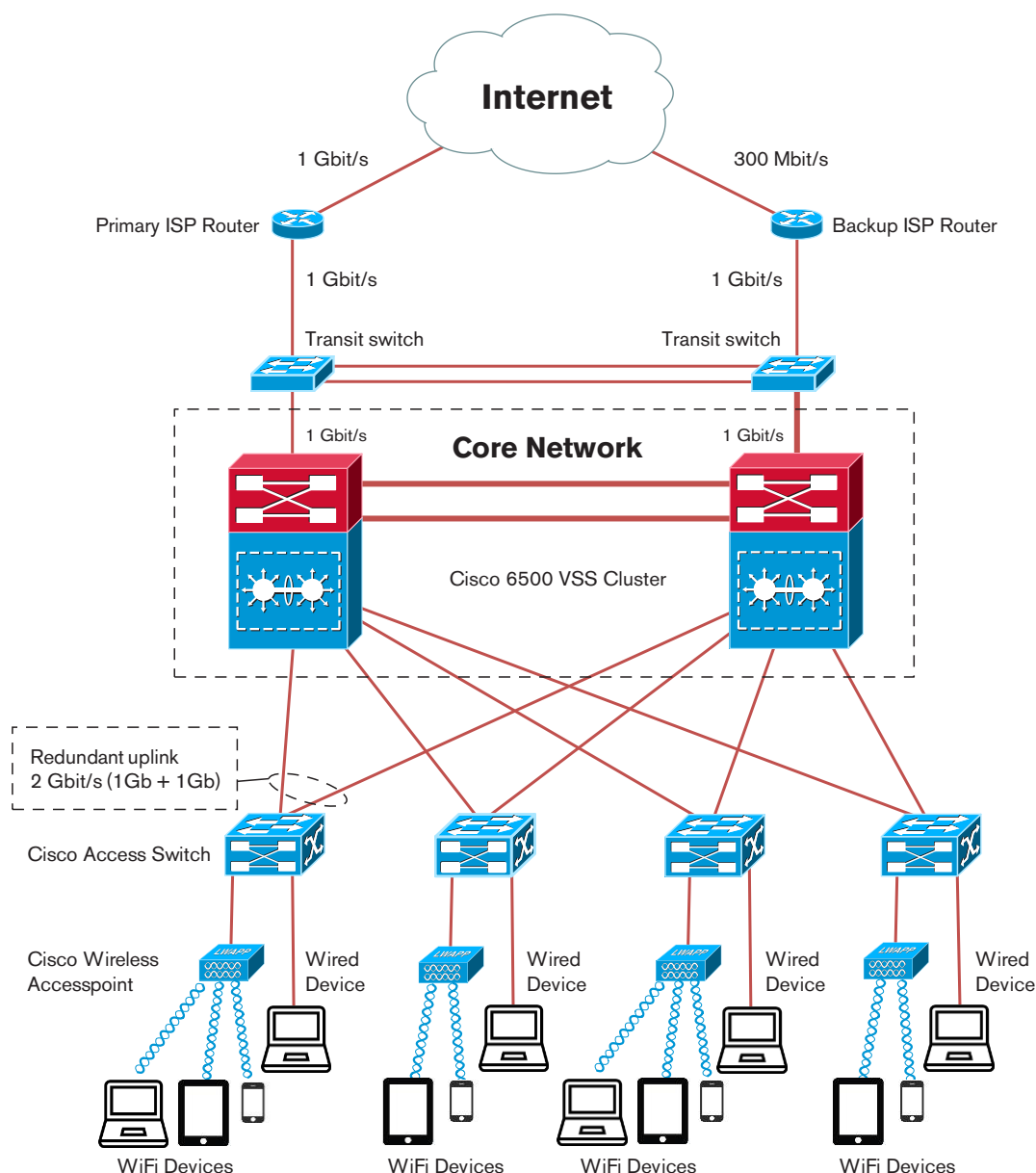
## FIXED NETWORKS (LAN)

<b>Technology</b>	Cisco Systems
<b>Bandwidth</b>	Connections up to 1 Gbit (10/100/1000 Mbit).
<b>Delivery points</b>	Our infrastructure enables us to provide fixed connections to any part of the premises including exhibition halls, congress halls, meeting rooms and all public areas. Meeting rooms are equipped with at least one Ethernet port. More may be added upon request.
<b>Static IP-address</b>	We provide static IP-addresses upon request.

## WIRELESS NETWORKS (WI-FI)

<b>Technology</b>	Cisco Systems
<b>Access points</b>	A total of 420 access points around the premises ensures top class Wi-Fi coverage. See separate fact sheets on rooms and halls for more detailed information.
<b>Standards</b>	We support the following standards: IEEE 802.11a/g/n/ac.
<b>Bandwidth</b>	We provide connections up to 1 Gbit (IEEE 802.11ac) depending on the specification and number of connected devices.
<b>Capacity</b>	Up to 10 000 concurrent devices with a high level of connection quality, this is scalable up to 20 000 concurrent devices.  Some examples of high capacity spaces:  <b>Congress hall A1</b> (3 600 sqm for a maximum of 3 000 seats) is equipped with 36 access points and has a capacity of at least 3 600 connected devices with a high level of connection quality.  <b>Congress halls A2-A9</b> (610 sqm each for a maximum of 550 seats each) are equipped with 6 access points each and a capacity of at least 600 connected devices.  See separate fact sheets on rooms and halls for more detailed information.

# Data communication and network



**Data centers** Two physically separated data centers with redundant core switches and redundant WLAN controllers.

**Internet connection** Redundant internet connection with a capacity of 1 Gbit.

**Fiber optic connections** We offer the possibility to lease a separate fiber connection to any of Stokab's delivery points around our premises. Such service is ordered directly from Stokab.

# Data communication and network

## SECURITY

Our public network is open to the internet and our customers are solely responsible for protecting connected IT equipment, for example with firewall and adequate virus protection.

All physical infrastructure like for example data centers, patching cabinets and switches are of course only accessible for authorized personnel at Stockholmsmässan.

We can provide Wi-Fi security of choice, like for example hidden SSID and encrypted data traffic (WPA, WPA2 etc.).

## SERVICE, SUPPORT AND MONITORING

Our network infrastructure is administered and monitored by the IT-department.

A special unit within the IT-department support our project teams with customer sales and consultation during event planning, event sales as well as provides support during the whole event according to an agreed upon staffing- and emergency duty schedule.

We do not offer email services (SMTP-server) and we do not offer support on such services.

We use software from Cisco Systems for configuration, monitoring data traffic and statistics reporting.

**Please contact our sales rep  
or project manager for further  
information or a quotation**